



Product Service

# EC-Statement of Compliance

No. E6 12 06 72237 055

**Holder of Certificate:** Shenzhen INVT Electric Co., Ltd.

No.4 Building, Gaofa Industrial Park  
 Longjing, Nanshan District  
 518055 Shenzhen  
 PEOPLE'S REPUBLIC OF CHINA

**Name of Object:** Electronic frequency converter  
 (Frequency Inverter)

**Model(s):** GD300-1R5G-4, GD300-2R2G-4, GD300-004G-4,  
 GD300-5R5P-4, GD300-5R5G-4, GD300-7R5P-4,  
 GD300-7R5G-4, GD300-011P-4, GD300-011G-4,  
 GD300-015P-4, GD300-015G-4, GD300-018P-4,  
 GD300-018G-4, GD300-022P-4, GD200-1R5G-4,  
 GD200-2R2G-4, GD200-004G-4, GD200-5R5P-4,  
 GD200-5R5G-4, GD200-7R5P-4, GD200-7R5G-4,  
 GD200-011P-4, GD200-011G-4, GD200-015P-4,  
 GD200-015G-4, GD200-018P-4, GD200-018G-4,  
 GD200-022P-4, GD35-004G-4-A1, GD35-004G-4-B1,  
 GD35-004G-4-C1, GD35-004G-4-D1, GD35-004G-4-H1,  
 GD35-5R5G-4-A1, GD35-5R5G-4-B1, GD35-5R5G-4-C1,  
 GD35-5R5G-4-D1, GD35-5R5G-4-H1, GD35-7R5G-4-A1,  
 GD35-7R5G-4-B1, GD35-7R5G-4-C1, GD35-7R5G-4-D1,  
 GD35-7R5G-4-H1, GD35-011G-4-A1, GD35-011G-4-B1,  
 GD35-011G-4-C1, GD35-011G-4-D1, GD35-011G-4-H1,  
 GD35-015G-4-A1, GD35-015G-4-B1, GD35-015G-4-C1,  
 GD35-015G-4-D1, GD35-015G-4-H1

**Description of Object:**

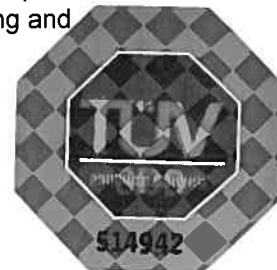
Rated Input Voltage : 3 PH, 400V, 47-63Hz  
 Rated Input Current : see page 2-3 for details  
 Rated Output Voltage : 3 PH, 0-400V, 0-400Hz  
 Rated Output Current : see page 2-3 for details  
 Protection Class : I

**Tested according to:** EN 61800-3:2004

This EC-Statement of Compliance is issued according to the Directive 2004/108/EC relating to electromagnetic compatibility. It confirms that the listed apparatus complies with such aspects of the essential requirements of the EMC directive as specified by the manufacturer or his authorized representative in the European Community and applies only to the sample and its technical documentation submitted to TÜV SÜD Product Service GmbH for testing and certification. See also notes overleaf.

**Technical report no.:** 687601107402

**Date,** 2012-06-11 (Johann Roidt)



TÜV SÜD Product Service GmbH is Notified Body to the Directive 2004/108/EC of the European Parliament and of the council with the identification number 0123.

**CERTIFICATE**  
**No: E6 12 06 72237 055**



Product Service

Model No.	Rated Input	Rated Output
GD300-1R5G-4	3 PH, 400V, 47-63Hz, 5.0A	3 PH, 0-400V, 0-400Hz, 3.7A, 1.5 kW
GD300-2R2G-4	3 PH, 400V, 47-63Hz, 5.8A	3 PH, 0-400V, 0-400Hz, 5.0A, 2.2 kW
GD300-004G-4	3 PH, 400V, 47-63Hz, 13.5A	3 PH, 0-400V, 0-400Hz, 9.5A, 4.0KW
GD300-5R5P-4	3 PH, 400V, 47-63Hz, 19.5A	3 PH, 0-400V, 0-400Hz, 14.0A, 5.5 kW
GD300-5R5G-4	3 PH, 400V, 47-63Hz, 19.5A	3 PH, 0-400V, 0-400Hz, 14.0A, 5.5 kW
GD300-7R5P-4	3 PH, 400V, 47-63Hz, 25.0A	3 PH, 0-400V, 0-400Hz, 18.5A, 7.5 kW
GD300-7R5G-4	3 PH, 400V, 47-63Hz, 25.0A	3 PH, 0-400V, 0-400Hz, 18.5A, 7.5 kW
GD300-011P-4	3 PH, 400V, 47-63Hz, 32.0A	3 PH, 0-400V, 0-400Hz, 25.0A, 11.0 kW
GD300-011G-4	3 PH, 400V, 47-63Hz, 32.0A	3 PH, 0-400V, 0-400Hz, 25.0A, 11.0 kW
GD300-015P-4	3 PH, 400V, 47-63Hz, 40.0A	3 PH, 0-400V, 0-400Hz, 32.0A, 15.0 kW
GD300-015G-4	3 PH, 400V, 47-63Hz, 40.0A	3 PH, 0-400V, 0-400Hz, 32.0A, 15.0 kW
GD300-018P-4	3 PH, 400V, 47-63Hz, 47A	3 PH, 0-400V, 0-400Hz, 38.0A, 18.5 kW
GD300-018G-4	3 PH, 400V, 47-63Hz, 47A	3 PH, 0-400V, 0-400Hz, 38.0A, 18.5 kW
GD300-022P-4	3 PH, 400V, 47-63Hz, 56A	3 PH, 0-400V, 0-400Hz, 45.0A, 22 kW

Model No.	Rated Input	Rated Output
GD200-1R5G-4	3 PH, 400V, 47-63Hz, 5.0A	3 PH, 0-400V, 0-400Hz, 3.7A, 1.5 kW
GD200-2R2G-4	3 PH, 400V, 47-63Hz, 5.8A	3 PH, 0-400V, 0-400Hz, 5.0A, 2.2 kW
GD200-004G-4	3 PH, 400V, 47-63Hz, 13.5A	3 PH, 0-400V, 0-400Hz, 9.5A, 4.0KW
GD200-5R5P-4	3 PH, 400V, 47-63Hz, 19.5A	3 PH, 0-400V, 0-400Hz, 14.0A, 5.5 kW
GD200-5R5G-4	3 PH, 400V, 47-63Hz, 19.5A	3 PH, 0-400V, 0-400Hz, 14.0A, 5.5 kW
GD200-7R5P-4	3 PH, 400V, 47-63Hz, 25.0A	3 PH, 0-400V, 0-400Hz, 18.5A, 7.5 kW
GD200-7R5G-4	3 PH, 400V, 47-63Hz, 25.0A	3 PH, 0-400V, 0-400Hz, 18.5A, 7.5 kW
GD200-011P-4	3 PH, 400V, 47-63Hz, 32.0A	3 PH, 0-400V, 0-400Hz, 25.0A, 11.0 kW
GD200-011G-4	3 PH, 400V, 47-63Hz, 32.0A	3 PH, 0-400V, 0-400Hz, 25.0A, 11.0 kW
GD200-015P-4	3 PH, 400V, 47-63Hz, 40.0A	3 PH, 0-400V, 0-400Hz, 32.0A, 15.0 kW
GD200-015G-4	3 PH, 400V, 47-63Hz, 40.0A	3 PH, 0-400V, 0-400Hz, 32.0A, 15.0 kW
GD200-018P-4	3 PH, 400V, 47-63Hz, 47A	3 PH, 0-400V, 0-400Hz, 38.0A, 18.5 kW
GD200-018G-4	3 PH, 400V, 47-63Hz, 47A	3 PH, 0-400V, 0-400Hz, 38.0A, 18.5 kW
GD200-022P-4	3 PH, 400V, 47-63Hz, 56A	3 PH, 0-400V, 0-400Hz, 45.0A, 22 kW

**CERTIFICATE**  
**No: E6 12 06 72237 055**



Product Service

Model No.	Rated Input	Rated Output
GD35-004G-4-A1, GD35-004G-4-B1, GD35-004G-4-C1, GD35-004G-4-D1, GD35-004G-4-H1,	3 PH, 400V, 47-63Hz, 13.5A	3 PH, 0-400V, 0-400Hz, 9.5A, 4.0KW
GD35-5R5G-4-A1, GD35-5R5G-4-B1, GD35-5R5G-4-C1, GD35-5R5G-4-D1, GD35-5R5G-4-H1,	3 PH, 400V, 47-63Hz, 19.5A	3 PH, 0-400V, 0-400Hz, 14.0A, 5.5 kW
GD35-7R5G-4-A1, GD35-7R5G-4-B1, GD35-7R5G-4-C1, GD35-7R5G-4-D1, GD35-7R5G-4-H1,	3 PH, 400V, 47-63Hz, 25.0A	3 PH, 0-400V, 0-400Hz, 18.5A, 7.5 kW
GD35-011G-4-A1, GD35-011G-4-B1, GD35-011G-4-C1, GD35-011G-4-D1, GD35-011G-4-H1,	3 PH, 400V, 47-63Hz, 32.0A	3 PH, 0-400V, 0-400Hz, 25.0A, 11.0 kW
GD35-015G-4-A1, GD35-015G-4-B1, GD35-015G-4-C1, GD35-015G-4-D1, GD35-015G-4-H1	3 PH, 400V, 47-63Hz, 40.0A	3 PH, 0-400V, 0-400Hz, 32.0A, 15.0 kW

\*\*\*